

SRSC45E5

**SANY**

Quality Changes the World



# FULL OF HIGH VOLTAGE

HIGHER, FURTHER, MORE EFFICIENT – NOW ALSO FULLY ELECTRIC



**REACH STACKER**  
**SRSC45E5**

Battery capacity  
**422 kWh**  
Load capacities at row 1 / 2 / 3  
**45 / 31 / 15 t**  
Wheel base  
**6000 mm**  
Axle  
**Kessler**

# FULL ELECTRIC REACH STACKER

- + High efficiency and low consumption
- + Cost savings in continuous operation
- + Fast charging with dual gun charging
- + Field experience with more than 400 Reach Stackers and Empty Container Handlers

Travel speed max. **20 km/h**  
 Overall weight **73 000 kg**  
 Overall width **6 042 – 12 175 mm**  
 Turning radius min. **8 100 mm**



## BATTERY

Type	Lithium iron phosphate (LFP)
Capacity	422 kWh
Warranty period	The attenuation in 5 years shall not exceed 30%
Full discharge cycle	>2800
Cooling mode	liquid
Continuous working time	6–9 h

## CHARGER

Charging duration	1–1.5 h
Charging power	2*150 kW

## ELECTRIC MOTORS

Travel motor power rated/peak	157 / 310 kW
Lift motor power rated/peak	160 / 270 kW

## DRIVE AXLE

Drive axle type	Kessler D102
-----------------	--------------

## BOOM

Lifting height max. (SANY Spreader)	15 100 mm
Lifting height min. (SANY Spreader)	1 120 mm
Tilting Angle	0–60°

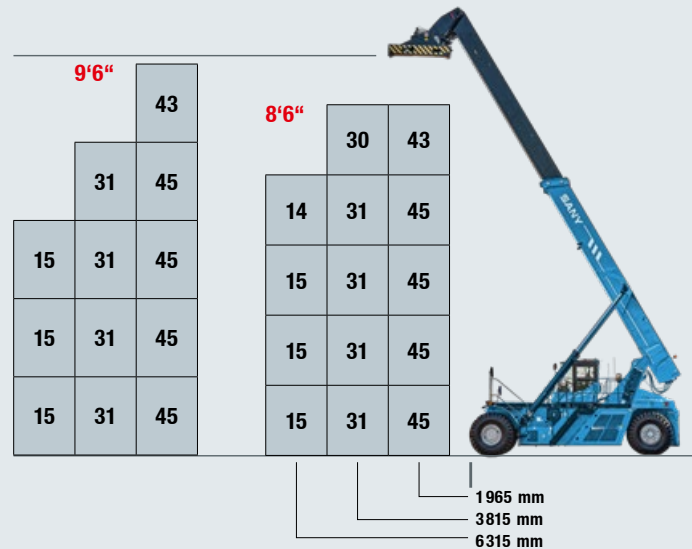
## TYRE

Tyre size	18.00-25
-----------	----------

## SPREADER SANY

Manufacturer	SANY
Model	SDJ450H
Side shift	+/- 800 mm
Rotation angle	+105° / -195°
Mechanical pile slope (slope compensation)	-2° / +2°
Spreader weight (TW)	7 200 kg
Application	Top Lift

## LOAD CHART



Not all products are available in all markets. As part of our continuous improvement process, we reserve the right to modify specifications and designs without giving prior notice. The figures may contain additional options.



Quality Changes the World

**SANY EUROPE GmbH**  
 Sany Allee 1  
 D-50181 Bedburg  
 Tel. +49 2272 90531 100  
 Fax +49 2272 90531 109  
 info@sanyeurope.com  
 www.sanyeurope.com